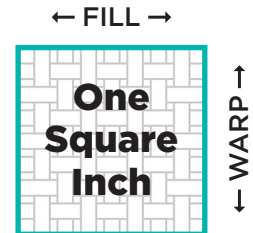


Understanding Thread Count

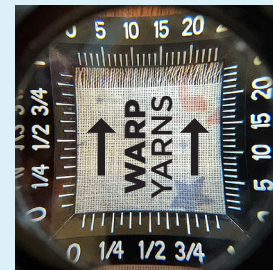
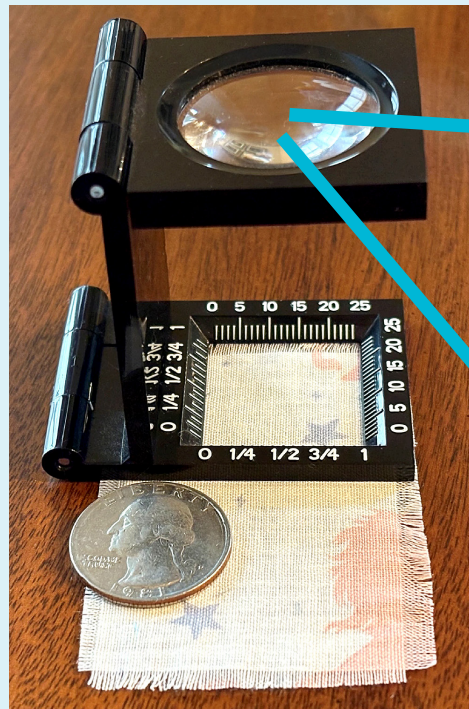
Thread count in sheet fabric is the number of yarns (or threads) in one square inch, woven in the up and down (*vertical / warp*) direction plus the side to side (*horizontal / fill or weft*) direction. Sheet thread count can depend on the yarn size, weave type (ex: plain or sateen), and how densely woven the fabric is. A higher thread count does not always equal “better sheets.”



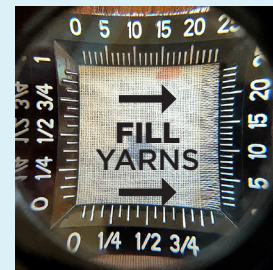
We use linen testers to calculate thread count. Linen testers feature a magnifying glass and a square opening with measurements.

Take a peek through the Linen Tester magnifying glass!

This specimen has a thread count of 130 (58 + 72 = 130).



58 WARP Yarns
(up and down direction)



72 FILL Yarns
(side to side)

- For ease and accuracy, thread count is performed on a small swatch (“specimen”) cut from the fabric.
- To keep track of the warp and fill directions, specimens are cut longer in the “warp” direction, in a rectangular shape.
- Loose threads are pulled away from one edge in each direction to provide a fringed edge. The yarns “poking out” in the fringe are counted.
- The linen tester changes positions to count the warp yarns and to count the fill yarns.

Can you calculate the thread count of a sheet fabric specimen? Turn the page to find out!



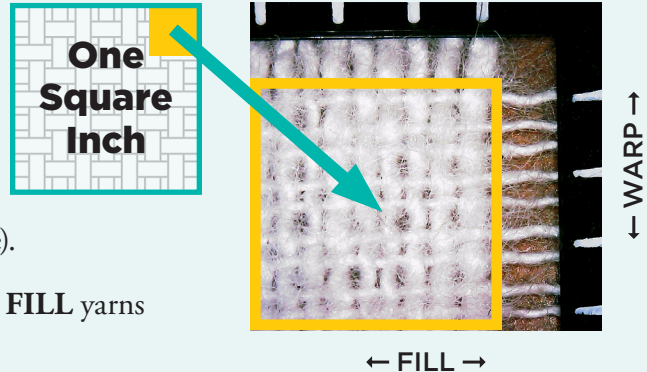
What is the thread count of this sheet fabric specimen?

100% Cotton · Plain Weave · Flannel Sheet

The photo on the right depicts an **enlarged 1/4-inch section** as viewed through a linen tester.

Count the yarns in the **WARP** direction and in the **FILL** direction. Multiply each count by four (because it is one-fourth of the specimen size).

Add the **TOTAL WARP** yarns and the **TOTAL FILL** yarns to calculate the **THREAD COUNT**.



WARP Yarns in photo: 9 x4 = _____ Total WARP Yarns in one inch

FILL Yarns in photo: 9 x4 = _____ + Total FILL Yarns in one inch

_____ = Thread Count of specimen*

**Thread Count is approximately 72 (36 Warp yarns + 36 Fill yarns).*

More thread counts

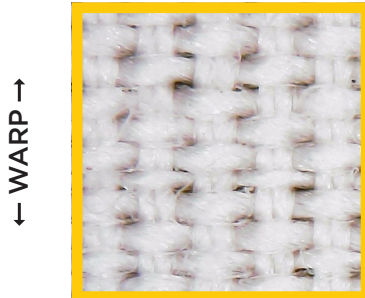
These photos depict **enlarged 1/16-inch sections** of two different sheets as viewed through a linen tester.

100% Cotton
Plain Weave Sheet



130 Thread Count
58 Warp Yarns
+ 72 Fill Yarns

100% Cotton
Basket Weave Percale Sheet



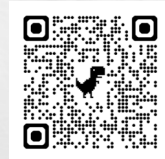
325 Thread Count
155 Warp Yarns
+ 170 Fill Yarns

Check out
our two-part
Talking FACS
Podcast about
Selecting Sheets:

Part 1



Part 2



Copyright © 2025 for materials developed by University of Kentucky Cooperative Extension. This publication may be reproduced in portions or its entirety for educational or nonprofit purposes only. Educational programs of Kentucky Cooperative Extension serve all people regardless of economic or social status and will not discriminate on the basis of race, color, ethnic origin, national origin, creed, religion, political belief, sex, sexual orientation, gender identity, gender expression, pregnancy, marital status, genetic information, age, veteran status, physical or mental disability or reprisal or retaliation for prior civil rights activity. Reasonable accommodation of disability may be available with prior notice. Program information may be made available in languages other than English. University of Kentucky, Kentucky State University, U.S. Department of Agriculture, and Kentucky Counties, Cooperating.